

Pressure/Vacuum
pumps

Bombas
de presión/vacío

Pompes
pression-vide

Bombas
de pressão/a vácuo

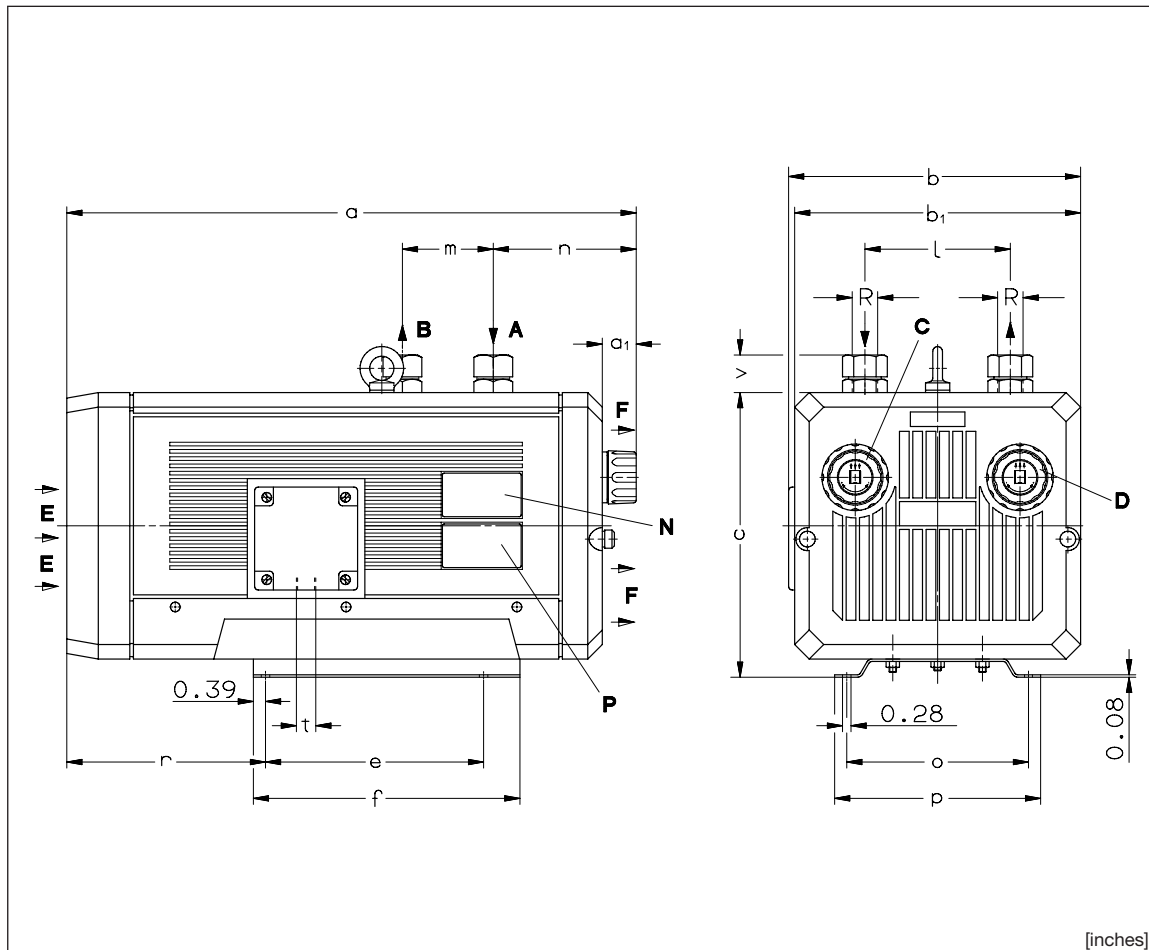
KLT



KLT 15

KLT 25

KLT 40



[inches]

A	Vacuum connection	Conexión vacío	Raccord du vide	Conexão do vácuo
B	Pressure connection	Conexión presión	Raccord surpression	Conexão da pressão
C	Vacuum regulating valve	Válvula reguladora de vacío	Valve réglage vide	Válvula de regulagem do vácuo
D	Pressure regulating valve	Válvula reguladora de presión	Valve de réglage pression	Válvula de regulagem da pressão
E	Cooling air entry	Entrada aire refrigerante	Entrée air refroidissement	Entrada do ar refrigerante
F	Cooling air exit	Salida aire refrigerante	Sortie air refroidissement	Saída do ar refrigerante
N	Data plate	Placa fecha	Etiquette caractéristique	Placa da data
P	Motor name plate	Placa mod. motor	Etiquette caractérist. moteur	Placa do nome do motor

KLT		15	25	40
[inches]	a	18.74	19.96	23.35
	a ₁	1.34	1.34	1.89
	b	9.53	9.53	10.79
	b ₁	9.29	9.29	10.47
	c	9.25	9.25	10.24
	e	7.09	7.09	7.87
	f	8.66	8.66	9.53
	l	4.72	4.72	5.91
	m	2.95	2.95	3.15
	n	4.88	6.10	7.01
	o	5.91	5.91	7.48
	p	6.69	6.69	8.27
	r	6.46	6.46	7.87
	t	M 25 x 1,5	M 25 x 1,5	M 25 x 1,5
	v	1.22	1.22	1.46
	R	1/2" NPT	1/2" NPT	3/4" NPT

DA 480

1.2.2004

**Gardner Denver
Hanover Inc.**

7222 Parkway Drive
HANOVER, MD 21076
USA

Fon 410 - 712 - 4100

Fax 410 - 712 - 4148

e-mail:
sales@vacuumpumps.com

www.vacuumpumps.com

KLT		15				25				40			
3~	50 Hz	200-255/346-440V ± 5 %											
	60 Hz	200-290/346-500V ± 5 %											
1~	50 Hz	230V ± 10 %											
	60 Hz	115V ± 10 %											
kw (3~)	50 Hz	0.75				1.1				1.85			
	60 Hz	0.90				1.3				2.2			
kw (1~)	50 Hz	0.75				1.0•				1.85•			
	60 Hz	0.90				1.3•				-			
A (3~)	50 Hz	3.6/2.1				5.55/3.2				9.0/5.2			
	60 Hz	3.8/2.2				5.55/3.2				9.0/5.2			
A (1~)	50 Hz	5.6				6.6				10.5			
	60 Hz	11.0				16				-			
rpm	50 Hz	1450											
	60 Hz	1740											
dB(A)	50 Hz	64				66				68			
	60 Hz	66				68				70			
lbs	3~	62.6				77.4				110			
	1~	63.1				77.6				115			
ZRK		13				13				20			
ZSA		13				13				20			
ZMS		#				#				#			

	Motor version	Versión motor	Exécution moteur	Versão do motor
3~/1~	Motor rating	Datos motor	Puissance moteur	Potência do motor
kw	Full load amperage	Amperaje de plena carga	Intensité absorbée	Amperagem da carga total
A	Speed	Velocidad	Vitesse rotation	Velocidade
rpm	Average noise level	Nivel de ruido medio	Niveau sonore moyen	Nível médio de ruído
dB(A)	Weight	Peso	Poids	Peso
lbs	Capacity	Capacidad	Volume engendré	Capacidade
cfm	Ultimate vacuum	Vacío final	Vide limite	Limite de vácuo
in. HgV	Excess pressure	Exceso de presión	Surpression	Pressão excessiva
psig	Suction air	Aire succión	Air aspiré	Ar de sucção
V	Compressed air	Aire comprimido	Air comprimé	Ar comprimido
P	Accessories	Accesorios	Accessoires	Acessórios
ZRK	Non return valve	Válvula retención	Clapet anti-retour	Válvula sem retorno
ZSA	Hose connection	Conexión manguera	Raccord tuyau	Conexão da mangueira
ZMS	Motor starter	Arranque motor	Disjoncteur moteur	Arranque do motor

KLT 15	in. HgV	V	0	12.2	15.2	18.1	0	12.2	15.2	18.1	0	12.2	15.2	18.1	0	12.2	15.2	18.1	
	psig	P	0				5.8				7.3				8.7				
cfm	V*	9.2	7.7	7.1	6.5	8.7	6.9	6.3	5.7	8.5	6.6	6.0	5.4	8.2	6.3	5.7	5.1	5.1	
(50 Hz)	P	9.8	7.5	6.8	6.1	9.1	6.7	6.1	5.4	8.8	6.4	5.8	5.2	8.6	6.1	5.5	4.9	4.9	
cfm	V*	11.1	9.2	8.5	7.8	10.5	8.2	7.5	6.8	10.2	7.9	7.2	6.5	9.9	7.5	6.8	6.1	6.1	
(60 Hz)	P	11.8	9.1	8.2	7.4	10.9	8.0	7.3	6.5	10.6	7.7	7.0	6.2	10.3	7.4	6.7	5.9	5.9	
kw	50 Hz	0.75																	
hp	60 Hz	0.90																	

KLT 25	in. HgV	V	0	12.2	15.2	18.1	0	12.2	15.2	18.1	0	12.2	15.2	18.1	0	12.2	15.2	18.1	
	psig	P	0				5.8				7.3				8.7				
cfm	V*	14.1	11.5	10.6	9.7	12.9	10.0	9.1	8.0	12.7	9.6	8.5	7.4	12.4	9.0	7.9	6.8	6.8	
(50 Hz)	P	15.4	11.6	10.7	9.7	13.8	10.1	9.2	8.3	13.2	9.7	8.7	7.9	12.7	9.2	8.4	7.7	7.7	
cfm	V*	17.0	13.8	12.7	11.7	15.5	12.0	10.9	9.6	15.2	11.5	10.2	8.8	14.8	10.8	9.5	8.2	8.2	
(60 Hz)	P	18.5	13.9	12.8	11.7	16.6	12.1	11.1	9.9	15.9	11.6	10.5	9.5	15.2	11.1	10.1	9.2	9.2	
kw	50 Hz	1.1																	
hp	60 Hz	1.5																	

KLT 40	in. HgV	V	0	12.2	15.2	18.1	0	12.2	15.2	18.1	0	12.2	15.2	18.1	0	12.2	15.2	18.1	
	psig	P	0				5.8				7.3				8.7				
cfm	V*	25.0	21.4	20.1	18.8	24.1	20.7	19.4	17.7	23.2	19.7	18.4	16.5	22.5	18.5	17.1	15.6	15.6	
(50 Hz)	P	24.7	18.4	16.7	14.8	23.8	17.7	16.0	14.1	22.8	17.1	15.3	13.6	21.8	16.2	14.5	12.9	12.9	
cfm	V*	30.0	25.7	24.1	22.6	30.0	24.8	23.3	21.2	27.9	23.7	22.0	19.8	27.1	22.2	20.5	18.7	18.7	
(60 Hz)	P	29.7	22.1	20.1	17.8	28.6	21.2	19.2	17.0	27.3	20.5	18.4	16.3	26.1	19.4	17.4	15.5	15.5	
kw	50 Hz	1.85																	
hp	60 Hz	2.2																	

* Relates to pump inlet conditions./ se refiere a las condiciones de entrada de la bomba./ relatif à l'état régnant à l'aspiration./ refere-se a condições de entrada da bomba.
 Curves and tables refer to compressor at normal operating temperature./ Las curvas y las tablas se referiran al compresor a la temperatura normal de operación./ Les courbes et tableaux sont établies, compresseur à température de fonctionnement./ As curvas e tabelas referem-se ao compressor a temperatura normal de operação.
 Technical information is subject to change without notice!/ La información técnica está sujeta a cambios sin previo aviso!/ Sous réserve de modification technique./ A informação técnica está sujeita a mudança sem aviso prévio!
 # on request # on pedido # sur demande # a pedido
 • Capacity on request • Capacidad on pedido • Courbes sur demande • Capacidade a pedido